

PBX-5014A-TT

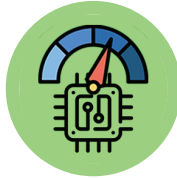
TOP-Level Workstation



Key applications

- Product Design and Engineering Simulation
- Media and Entertainment Content Creation

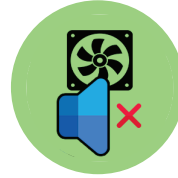
AMD
THREADRIPPER
PRO



Professional Overclocking



Liquid Cooler



Quiet Operation



PCI 4.0 High Endurance



3 Years Premium warranty

Basic features



AMD Ryzen® Threadripper™ PRO 5000WX/3000WX
up to 64 cores



Nvme 1TB Gen4 1DWP,
R 700000 - W 400000 IOPS (4KB)



8 DIMMs,
up to 2TB registered ECC DDR4 3200MHz



Up to 4 Nvidia® Quadro GPU supported
A2000, A4000, A4500, A5500, A6000 (*)



2000W Platinum Level
Power Supply

*One optional Gaming GPU supported: Nvidia® GeForce RTX 3060, Nvidia® GeForce RTX 3070, Nvidia® GeForce RTX 3080, Nvidia® GeForce RTX 3090, Nvidia® GeForce RTX 4090




Office Computers Solution srl
Via Padre Piamarta, 29/d
25021, Bagnolo Mella (BS) - Italia



Mail: ocs@ocsolution.it
Mail: supporto.clienti@ocsolution.it
Telefono: +39 030 266314



Specifications

Processor	Chassis
Chipset: AMD® WRX80	Form factor: Full Tower
Socket: AMD® Socket sWRX8/SP3	Optional: Rackmount Kit (6U)
Processor: AMD Ryzen™ Threadripper™ PRO 5000WX/3000WX Series	Dimensions (mm): 573 (L) x 222 (W) x 535 (H)
Max # of Cores: Up to 64 cores	Color: Black
System cooling	Front Panel
Fans: - 1 x 12cm rear exhaust fan - 2 x 12cm front cooling fans	Buttons: - Power On/Off button - LED On/Off button
Memory	LEDs: Power LED
Capacity: 8 DIMM slots	Buttons: - 1 x USB 3.2 (Type C) - 2 x USB 3.2 (Type A) - 2 x USB 2.0 - 1 headphone jack - 1 audio jack
Support: Up to 2TB Registered ECC DDR4 3200MHz SDRAM	Input/Output
Bus: 8-channel memory bus	SATA: 4 x SATA3 (6Bbps)
Storage	LAN: - 1 x RJ45 10GBase-T Ethernet - 1 x RJ45 GbE Ethernet (Shared with IPMI)
M.2 interface: 4 x PCIe 4.0 x4	USB: - 1 x USB 3.2 Gen 2x2 (Type C, 20Gbps) - 5 x USB 3.2 Gen 2 (4 Type A, 1 front Intel Type C header, 10Gbps) - 5 x USB 3.2 Gen 1 (3 Type A, 1 via header) - 2 x USB 2.0 via header
Form Factor: 2280, 22110	Video: 1 x VGA (dedicated for IPMI)
Key: M-Key	Audio: 7.1 HD Audio with optical S/PDIF
Expansion slots	Serial Port / Header: 1 x COM port (rear)
PCIe slots: 6 x PCIe 4.0 x16	TPM: 1 x TPM 2.0 Header
U.2: 2 x U.2 Sockets with Software RAID 0,1 support	Drive Bays
On-Board devices	Fixed: - 4 x internal fixed 3.5"/2.5" SATA3 - 2 x front fixed 2.5" SATA3
SATA: SATA 3 (6Gbps); RAID 0, 1, 5, 10	Peripheral Bays: 2 x 5.25"
Network Controllers: - 10G LAN: Single LAN via Marvell AQC113C 10G Ethernet Controller - 1GbE LAN: Single LAN with Intel® I210-AT Ethernet Controller	Operating system
Audio: 7.1 channel HD Audio by Realtek LC4050H+ALC1220	OS: - Microsoft® Windows™ 11 Pro 64 bit - Microsoft® Windows™ 10 Pro 64 bit - Linux RHEL 9.0
Power supply	
Base power: 2000W/2 Multi-Output Power supply	
Certification:  Platinum Level	

